

Haslemere

FOOD FESTIVAL 2009

Visit the Fourth Haslemere Food Festival!

Sat 5th Sept – Sun 20th Sept 2009

Events include:

- Haslemere Farmers' Market 6 Sept
- Wine & Cider Talk and Tasting 8 Sept
- 'Science of Baking' 9 Sept
- Haslemere Beer Festival 11/12 Sept
- The 'Italia in Piazza' market 11 Sept
- Supreme Sausage Competition 12 Sept
- Crafty Chefs 12 Sept
- Teddy Bears' Picnic 13 Sept
- Curry Night 13 Sept
- Youth Barbecue 15 Sept
- Quiz Night and Chilli Supper 16 Sept
- Fun Wine Tasting Challenge 19 Sept
- Mayor's Charity Gala Dinner 19 Sept
- Junior Masterchef Competition 20 Sept
- Thai Night 20 Sept

For further information visit www.haslemere.com/foodfestival
or call 01483 523088

Haslemere Food Festival is organised by the Haslemere Initiative in partnership with a range of supporters including the Haslemere Herald, Waverley Borough Council and many local businesses

South West Surrey Farmers' Market Co-operative Ltd
Bring you fresh, seasonal, local produce
direct from your award winning Farmers' Market producers

Cranleigh	Stocklund Square, High Street	1 st Friday monthly 10am – 2pm
Haslemere	Behind Collingwood Batchellor, High Street	1 st Sunday monthly 10am – 1.30pm
Milford	Secretts, Chapel Lane	3 rd Sunday monthly 10am – 1.30pm



For further information contact 01483 523088 or visit
www.waverley.gov.uk/farmersmarket



Surrey County Ploughing Match and Country Fair

Sunday September 27 from 9am - 5pm

set against the beautiful backdrop of 500 year old *Loseley Park* just off the B3000, near Guildford

This is a highspot on Surrey's rural calendar, a family fun day with a genuine country feel where visitors can watch and also try their hand at a wide variety of activities and crafts.

2009 is the 180th year of the Surrey County Ploughing Match and this year it hosts the National Vintage Area Finals for Surrey and Hampshire as well as having the usual range of modern, novice and horse-drawn plough classes.



New activities this year include a Lurcher Display, Gun Dog Trials and Otter Display. Old favourites include Falconry, Petplan Dog Agility, Racing Pigeons, Dog Rescue and Dog Training, Terrier Racing, Fly Fishing, a Vintage Tractor Display, Have a go Tractor Driving, Clay Pigeon Shoot, Off-Road 4x4 Course with Bishops Nissan, Ferrets, Classic Cars, a Farmer's Market, Train and Tractor Rides and traditional Punch and Judy Show.



Tickets: Adults £7.50, Over 65s £6, Children £4.50, under 5s free. Family £22.

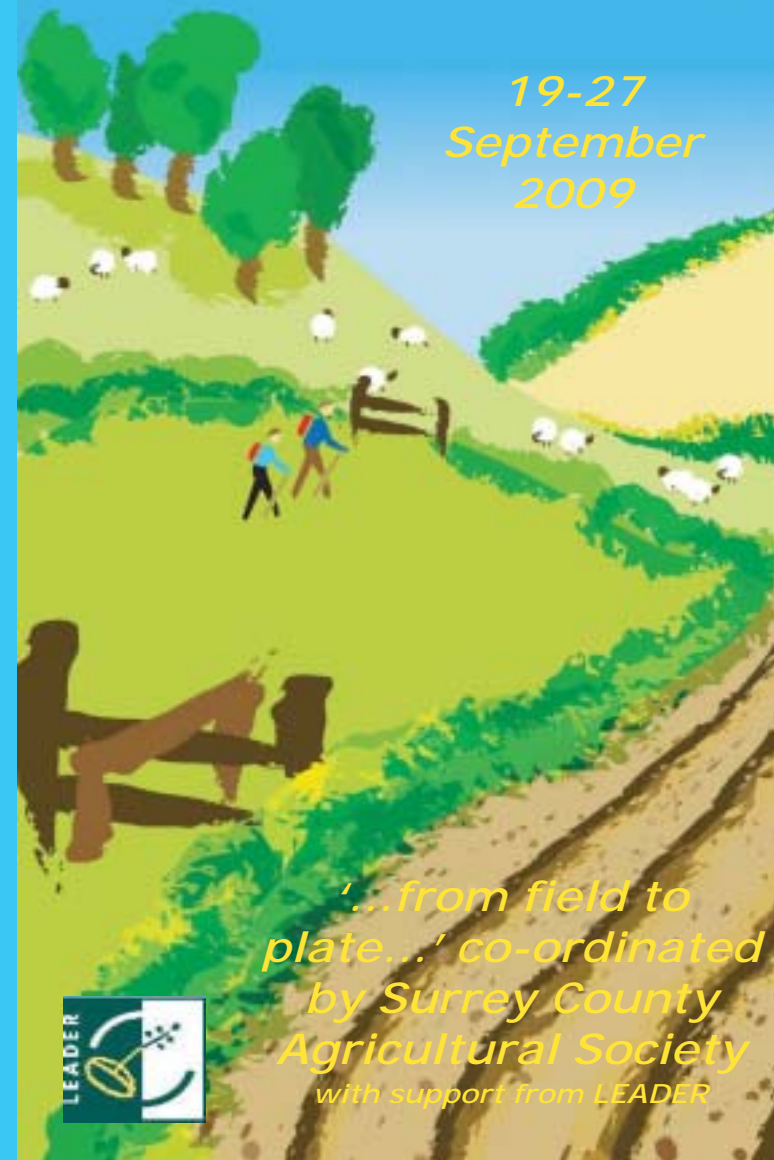
Big Discounts are available for advance ticket sales. Go to www.surreycountyshow.co.uk for major savings.
Adults £6.50, Over 65s £5, Children £4, Family £20.

Surrey County Agricultural Society: 01483 890810.

Farmers Market Dates for September: Byfleet 5th, Cobham 19th, Cranleigh 4th, Dorking 9th, Epsom 6th, Farnham 27th, Guildford 1st, Haslemere 6th, Milford 20th, Redhill 11th, Reigate 25th, Ripley 12th, Wallington 12th and Woking 17th.

Surrey Farm and Food Week

19-27
September
2009



'...from field to plate...' co-ordinated
by Surrey County
Agricultural Society
with support from LEADER



Surrey Farm and Food Week 2009 Diary of Events

ALL farm walks are FREE, with a separate charge for Field to Plate food. Please phone the contact numbers to say you are coming.

Saturday September 19



Farm Walk and Open Day 1pm-5pm

Goldstone Farm, Polesden Lacey. See champion Ayrshire dairy cattle, modern farm technology and stunning parkland scenery. Trailer rides, crafts, displays and refreshments. Contact 01372 451737.

Farm Walk 3pm

Manor Farm, Wotton. See 21st century commercial farming in the Surrey Hills combining traditional farm methods, modern technology, conservation, education, local and national food production. Taste Belted Galloway beef. See www.manorfarmsurrey.com. Contact 01306 731600.

Sunday September 20

Farm Walk and Open Day 11am-4pm

Sherbourne Farm, Albury. Farm tours and trailer ride round this family farm on the chalk scarp slope of the North Downs by the Silent Pool. See cattle, sheep, pigs and all kinds of poultry. Refreshments and farm gate sales. Contact: 01483 202586.

Harvest Festival 10.45am

Thanksgiving service for the harvest, led by the three churches in Milford as part of South West Surrey Farmer's Market at Secretts, Chapel Lane, Milford.

www.waverley.gov.uk/farmersmarket.

Field to Plate Farm Walk 11am-12.30pm

Meet at **Home Farm**, Coldharbour Lane, Dorking, RH4 3JG for coffee and see livestock enterprise with Shorthorn cattle, Saddleback and Berkshire pigs and Dorset cross sheep run by the Gotto family of The Parrot at Forest Green. Walk followed by a full **Sunday Lunch at The Parrot**. Menu includes home-grown beef, lamb & pork. Booking essential. Contact 01306 621339.



Tuesday September 22

Parkland and Cheese Farm Walk 2.30pm

Norbury Park Farm, Mickleham. Meet at Young Street (Leatherhead) car park. Walk through spectacular 18th century parkland and see traditional dairy herd and watch Surrey's cheeses being made by hand. Tastings and farm gate sales. Contact: 07799 231402.

Farm Walk 5pm

Hardwick Court Farm, Chertsey. Find out how farming has changed with a guided walk round this mixed farm with heavy horses, cattle and sheep and vintage farm machinery. Refreshments. Contact 01932 571237.

Wednesday September 23

Runner Bean Day 10am-4pm

Fanny's Farm Shop, Gatton Bottom, Merstham. All about runner beans. See the farm museum and visit two cutting-flower gardens. Tastings and refreshments. Contact 01737 554444.

Thursley Spit Roast Lunch

The **Three Horseshoes** community-owned pub in Thursley is promoting Surrey produce on the menu all week and holding a Mutton Spit Roast with trimmings and local cask ale on Wednesday lunchtime. Eat local, eat well. Contact 01252 703268.

Thursday September 24

Water and Woods Walk 11am

Bury Hill Fisheries, Dorking. Walk around historic Old Bury Hill Lake and see the fisheries and the new specimen carp lake, small lake and the topsoil/firewood working area. Refreshments available. 01306 877540.

Friday September 25

Field to Plate Farm Walk 6pm

Milton Court Farm, Westcott Road, Dorking RH4 3LY. Farm walk to see sheep and conservation measures on a small mixed farm running a boxed lamb scheme. Walk followed by **BBQ of farm produce**. Contact 07767 834621.

Saturday September 26

Field to Plate Farm Walks 11am and 2.30pm

Etherley Farm, Ockley, Dorking, Surrey, RH5 5PA Contact: 01306 621 423 or etherleyfarm@btconnect.com. Walks followed by a home produce **Etherley BBQ Lunch or Tea**.



Field to Plate Farm Walk 11am

Hampton Estate, Seale Meet at the top Broomfields (GU8 6LG) off Fulbrook Lane between Cutmill crossroads & Elstead. Walk through the river Wey water meadows to hear about cattle, our pillboxes and the elusive otter. All dogs welcome on leads. Contact 01483 810465.

Walk followed by a home produced **Hampton BBQ Lunch**. All proceeds to the United Parish of Seale, Sands, Puttenham & Wanborough. Booking essential. Contact 01483 810465 or hampton.estate@farmline.com.

Field to Plate Farm Walk 2pm

Harewood Home Farm, Outwood. Farm walk to see field margins, hedgerows managed for wildlife, pond restoration in progress, beef suckler herd and old oast. BBQ of farm produce and refreshments. Contact 01342 844840.

Surrey Farm Food Festival 9.30am-2pm

Civic Centre Car Park, Esher. Come and meet local food producers and stock up your larder at this special farmer's market. Contact 07799 231402.

Ockley Food Fair 1-5pm

Village Greens Farm Shop Food Fair on the field opposite the shop with cookery demonstration, Farmer's Market and Hog Roast. Meet the farmers whose food is found in the shop, see their wide range of produce and find out how best to cook it. Contact 01306 713474.

Farm Walk and Open Day 10am-4pm

Furnace Place Estate, Haslemere. Family Farm Walk. See farm animals, activities and demonstrations. Bread tastings with Imbhams Farm Granary. Bring your own picnic. Refreshments available. Contact 01428 644088.

Sunday September 27

Surrey County Ploughing Match and Country Fair 9am-6pm

Traditional rural entertainment at Loseley Park, near Guildford. Ploughing competitions for horse teams, vintage and modern tractors. Fantastic family day out.

Dogs welcome on leads. Ring Surrey County Agricultural Society for details on 01483 890810 or visit www.surreycountyshow.co.uk.

